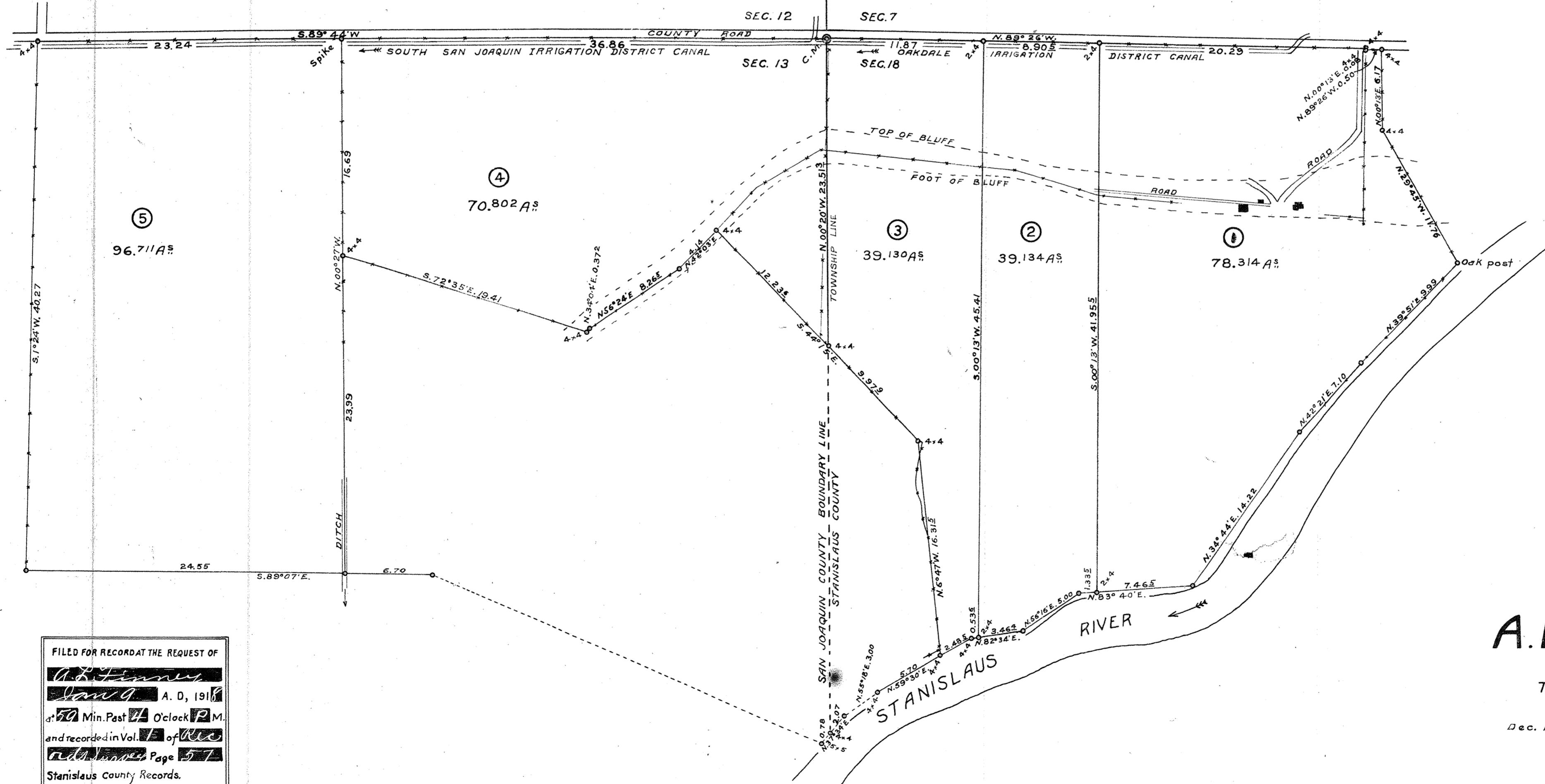


1-5-57



FILLED FOR RECORD AT THE REQUEST OF
Archibald L. Finney
 Jan 9 A. D. 1917
 at 10 Min. Past 24 O'clock P. M.
 and recorded in Vol. 17 of *Records*
 Stanislaus County Records.
 Page 57
 By *Alvin* Deputy Recorder.
 Fee *Heater* Paid.

SURVEY
 FOR
A. E. LICHAU
 in the
 THOMPSON RANCHO
 Scale 1 in. = 6 chs.
 Dec. 1917 by Archibald L. Finney,
 State Licensed Surveyor.

See map of Stanislaus Co. 1917
25/1/15

1-5-57