

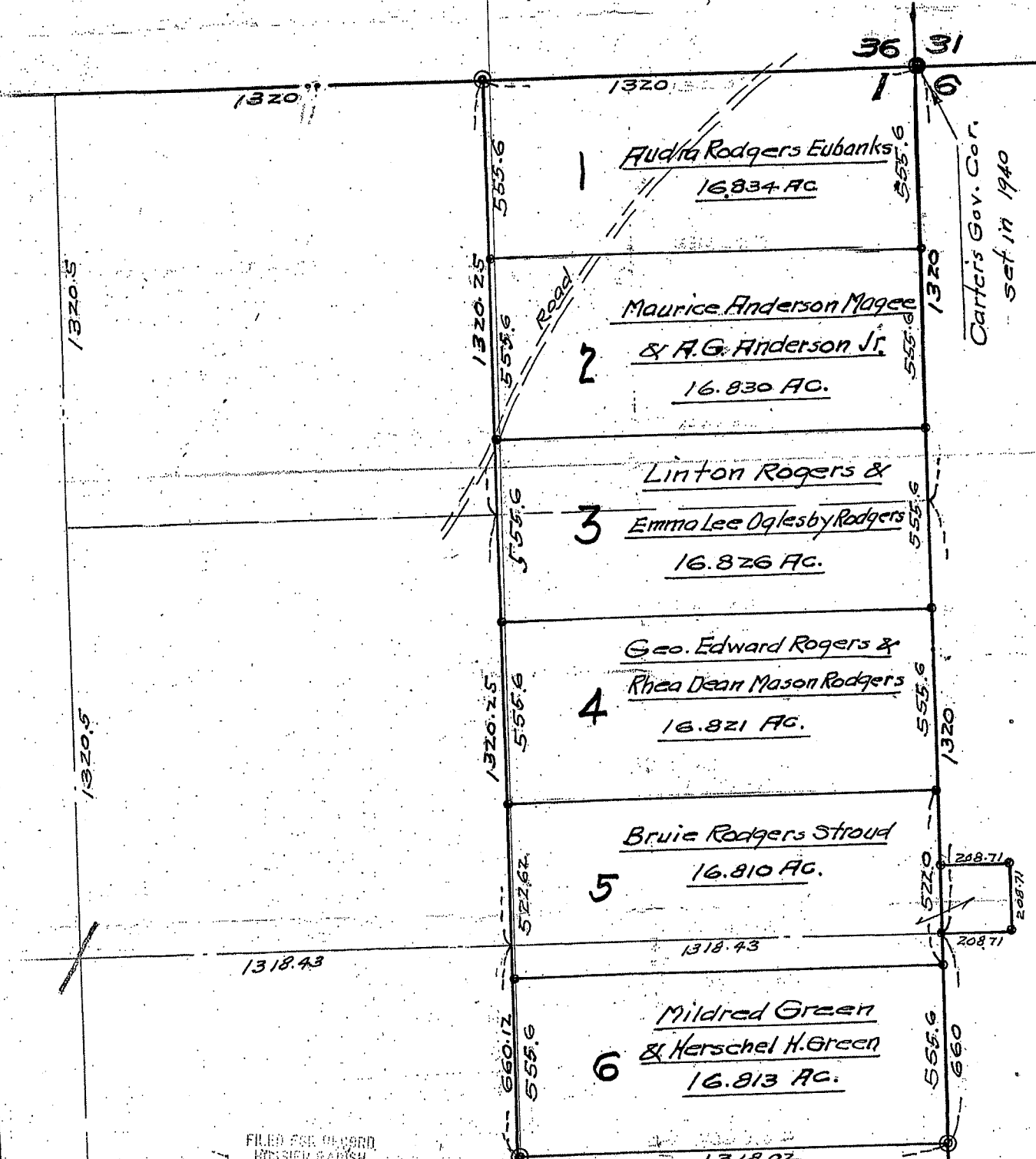
PARTITION OUT VE
George Edwards Rodgers Estate
 Comprising the E 1/2 of NE 1/4 & N 1/2 of NE. of SE.
 SEC. 1. T. 22. R. 12 & One acre in SEC. 6. T. 22. R. 11.

BOSSIER PAR. LA.

July-2-58. Scale 1"=300

Geo. E. Dutton Engr.

NEC



Carters Gov. Cor.
set in 1940

FILED FOR RECORD
BOSSIER PARISH
LOUISIANA

RECORDED

The 7th day of July, A.D., 1958
 In Conveyance, Vol. 275 page 221
Alma G. Bransard & Alma G. Bransard

JUL 8 04 AM 1958