

REGISTERED THIS THE \_\_\_\_ DAY OF \_\_\_\_ 20 \_\_\_\_  
AT \_\_\_\_ AM. PM RECORDED IN BOOK \_\_\_\_ PAGE \_\_\_\_  
BY \_\_\_\_ REGISTER OF DEEDS  
\_\_\_\_ DEPUTY/ASSISTANT

LINE	BEARING	DISTANCE
L1	S 34°46'52"W	311.40'
L2	S 74°55'49"E	287.58'
L3	S 82°22'30"E	220.32'
L4	N 83°15'03"E	258.93'
L5	S 70°33'54"E	212.68'

N.C. GRID MAD 83 (NSRS 2011)  
COMBINED FACTOR: 0.9998495

- MANHOLE NC GRID COORDS.
- \*A\* N 469697.35 US FT. E 2147860.59 US FT.
  - \*B\* N 469441.64 US FT. E 2147683.20 US FT.
  - \*C\* N 469366.89 US FT. E 2147960.84 US FT.
  - \*D\* N 469337.65 US FT. E 2148179.18 US FT.
  - \*E\* N 469368.08 US FT. E 2148436.28 US FT.
  - \*F\* N 469272.83 US FT. E 2148706.22 US FT.
  - \*G\* N 469297.33 US FT. E 2148636.80 US FT.

STATE OF NORTH CAROLINA  
COUNTY OF HOBART  
I, \_\_\_\_\_, REVIEW OFFICER  
OF HOBART COUNTY, CERTIFY THAT THE MAP OR PLAT TO WHICH  
THIS CERTIFICATION IS AFFIXED MEETS ALL STATUTORY REQUIREMENTS  
FOR RECORDING.  
REVIEW OFFICER \_\_\_\_\_ DATE \_\_\_\_\_

- LEGEND OF SYMBOLS
- EXISTING CONCRETE MONUMENT
  - CONCRETE MONUMENT SET
  - EXISTING IRON PIPE
  - IRON PIN SET ( 5/8" REBAR )
  - AS INDICATED AT POINT
  - CALCULATED POINT
  - MANHOLE
  - POWER OR TELEPHONE POLE
  - DB DEED BOOK
  - PG PAGE
  - R/W RIGHT-OF-WAY
  - SURVEYED BOUNDARY LINE
  - OTHER SURVEYED LINE
  - NON-SURVEYED LINES PLATTED FROM DEEDS OR PLATS
  - RIGHT-OF-WAY LINE
  - OVERHEAD ELECTRIC LINE
  - SANITARY SEWER LINE
  - ( TIE )
  - NAD 83 (NSRS 2011) NORTH AMERICAN DATUM 1983 (NATIONAL SPATIAL REFERENCE SYSTEM 2011)

THURMAN UNIVERSITY  
GEOMATICS CAMPUS  
DB 1776 PG 704

- GENERAL NOTES:
- ALL BEARINGS ARE BASED UPON NAD83(2011).
  - ALL DISTANCES ARE HORIZONTAL GROUND IN US SURVEY FEET UNLESS OTHERWISE NOTED.
  - ALL COORDINATES ARE NAD83(2011) GRID.

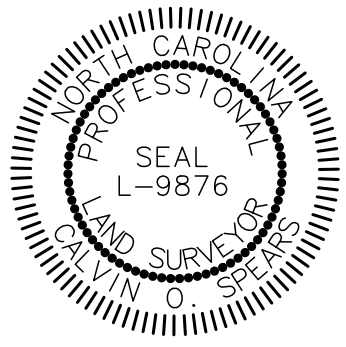
I, CALVIN O. SPEARS, CERTIFY THAT THIS PLAT WAS PREPARED UNDER MY SUPERVISION FROM AN ACTUAL FIELD SURVEY OF DESCRIPTION(S) AS RECORDED IN DEED BOOK 1989, PAGE 06

THAT THE BOUNDARIES NOT SURVEYED ARE CLEARLY INDICATED AS SUCH AND WERE PLOTTED FROM INFORMATION AS REFERENCED HEREON; THAT THE RATIO OF PRECISION AS CALCULATED WAS 1:25,880 AND THAT THE GLOBAL NAVIGATION SATELLITE SYSTEM (GNSS) WAS USED TO PERFORM A PORTION OF THIS SURVEY AND THE FOLLOWING INFORMATION WAS USED:

CLASS OF SURVEY: CLASS A  
POSITIONAL ACCURACY: 0.05"  
TYPE OF GPS FIELD PROCEDURE: RTK  
DATES OF SURVEY: 06/10/18 - 06/14/18  
DATUM/EPOCH: NAD83(2011)  
PUBLISHED/FIXED-CONTROL USE: VRS  
GEOID MODEL: 2012B  
COMBINED GRID FACTOR: 0.9998495  
UNITS: US SURVEY FEET

I FURTHER CERTIFY THIS IS A SURVEY OF AN EXISTING PARCEL OR PARCELS OF LAND OR ONE OR MORE EXISTING EASEMENTS AND DOES NOT CREATE A NEW STREET OR CHANGE AN EXISTING STREET.

THAT THIS PLAT MEETS THE REQUIREMENTS OF THE STANDARDS OF PRACTICE FOR LAND SURVEYING IN NORTH CAROLINA (21 NCAC 56 .1600) AND THAT THIS PLAT WAS PREPARED IN ACCORDANCE WITH G.S. 47-30 AS AMENDED. WITNESS MY HAND AND SEAL THIS 20 DAY OF JULY, 2018



REVISION MADE 07/20/2018:  
REVISED LINE WEIGHT OF OVERLAP AREA

NORTH CAROLINA BOARD OF EXAMINERS  
FOR ENGINEERS AND SURVEYORS  
FIRM NUMBER F-0000  
4601 SIX FORKS ROAD - SUITE 310 - RALEIGH, NC 27609  
PHONE (919) 791-2000 FAX (919) 791-2012

- REFERENCES
- MAP, ALVIS KELLEY ESTATE, APRIL 1913 BY S.T. PEEBLES, SURVEYOR (UNRECORDED)
  - WILL OF JAMES SHIPMAN, WILL BOOK 4, FILE 232, CLERKS OFFICE
  - DEED BOOK 1989 PAGE 6
  - SANITARY SEWER EASEMENT DEED BOOK 2301 PAGE 29

BOUNDARY SURVEY FOR CLEARLY UNREAL CORP.

CURRENT OWNERS  
DAVID J. EVANS AND DAVID S. TUTTLE

COPPER CREEK TOWNSHIP  
HOBART COUNTY, NORTH CAROLINA  
DEED REFERENCE - DB 1989 PG 06

SCALE 1" = 100'  
JULY 20, 2018  
PIN # 1946.15-03-0925

S.R. 3833 RITTER EXECUTIVE DRIVE  
( 60' PUBLIC R/W, 20' PAVT. )

N 38°38'00"W 42.74'

S 88°43'00"W 468.51'

S.A. SMITH  
DB 1729 PG 301

J.G. HAYNES  
DB 2001 PG 12

C.A. ELLINGTON, JR.  
DB 752 PG 23

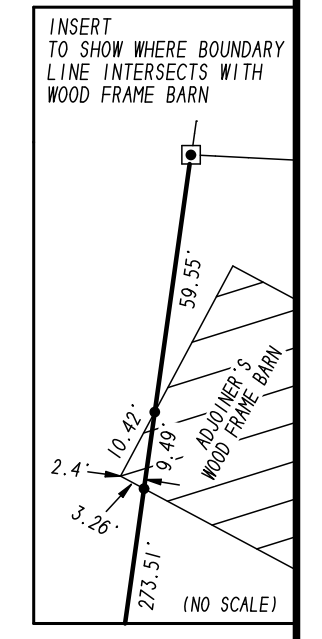
B. SHIELDS  
DB 1978 PG 123

DB 1989 PG 06  
21.413 ACRES  
( DEEDED AREA INCLUDING OVERLAP )  
21.138 ACRES  
( EXCLUDING OVERLAP )

D.L. POND  
DB 2107 PG 151

OVERLAP OF DEED DESCRIPTIONS.  
AREA IN OVERLAP ±12,004 SQUARE FEET OR ±0.275 ACRE

DB 1989 PG 06  
DB 2107 PG 151  
DB 1989 PG 06  
DB 2107 PG 151  
DB 1989 PG 06  
DB 2107 PG 151



EXISTING AXLE  
THE BEGINNING CORNER  
DB 2107 PG 151

J.M. LOGSDON  
DB 1921 PG 721

J.S. CARE  
DB 760 PG 250

R.M. BENTON  
DB 1999 PG 539

A.G. ZOUTEWELLE  
DB 2006 PG 12

N.C. GRID STATION "BUCK"  
N 470521.000 US FT. E 2149221.020 US FT.  
NAD 83 (NSRS 2011)  
NAVD 88 ELEVATION 726.38'

N.C. GRID STATION "BUCK AZ MK"  
N 470563.091 US FT. E 2151951.846 US FT.  
NAD 83 (NSRS 2011)

EXISTING PINION GEAR  
N 469678.26 US FT. E 2147864.46 US FT.  
NAD 83 (NSRS 2011)

60' RIGHT OF WAY ( DB 401 PG 71 )

EXISTING 3/4" REBAR

EXISTING 2" PIPE

EXISTING CONCRETE MONUMENT

ADJOINER'S WOOD FRAME BARN

MANHOLE "F"

EXISTING AXLE  
THE BEGINNING CORNER  
DB 2107 PG 151

5/8" REBAR 2.30' WEST 30" PIN OAK "MARKED"

GAP IN DEED DESCRIPTIONS. AREA IN GAP ±3,132 SQUARE FEET OR ±0.072 ACRE

N 86°01'37"E 49.63'

S 08°55'18"W 129.50'

S 08°00'00"W 462.00' ( TOTAL )

S 13°18'00"E 382.36' ( TOTAL )

N 08°55'18"E 254.45'

N 08°55'18"E 249.49'

S 08°55'18"E 127.91'

S 08°55'18"E 97.23'

EXISTING 1/2" ROD IN PILE OF STONES 23.3' WEST OF POWER POLE

EXISTING 1" PIPE 1.5' EAST OF POWER POLE

35 FT. 70 FT.

CENTRAL POWER & LIGHT CO. EASEMENT

D.B. 293 PG. 898

476.20'

362.77'

N 89°19'00"W 936.20' ( TOTAL )

BOUNDARY SURVEY FOR

CLEARLY UNREAL CORP.

CURRENT OWNERS  
DAVID J. EVANS AND DAVID S. TUTTLE

COPPER CREEK TOWNSHIP  
HOBART COUNTY, NORTH CAROLINA  
DEED REFERENCE - DB 1989 PG 06

SCALE 1" = 100'

JULY 20, 2018

PIN # 1946.15-03-0925

( SIGNATURE )

PROFESSIONAL LAND SURVEYOR L-9876